

Baillie Gifford appoints new partners

January 2022

Baillie Gifford, the global investment management partnership, will appoint eight new partners this year.

From 1 May 2022, the new partners will be Julia Angeles, Jenny Davis, Lorna Kennedy, Linda Lin, Milena Mileva, Peter Singlehurst, Michael Stirling-Aird, and Tom Walsh. Six of the new partners are investment managers and two are client directors. Collectively they have worked at the firm for over 100 years.

Andrew Telfer, joint senior partner, said: “Our partnership structure allows us to be truly long-term investors, aligning the firm’s ambitions with the savings goals of our clients.

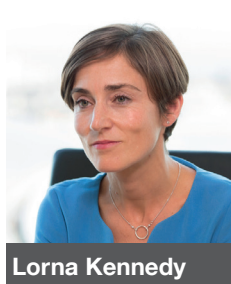
“The purpose of the partnership is to look after and improve the firm for the next generation. Nurturing talent and promoting from within is a key component of our robust succession planning and these promotions reflect the individuals’ hard work and commitment over many years.”

James Anderson, Gerard Callahan, Lynn Dewar and Angus Franklin will retire from the firm on 30 April 2022. Therefore, the number of partners will rise from 47 to 51.



Julia Angeles

Julia leads the Health Innovation Strategy and is a member of the International Growth Team. She joined Baillie Gifford in 2008 and has been a driving force in developing the firm’s relationships with a network of external experts. Julia’s leadership and mentoring skills have also been widely recognised across the firm.



Lorna Kennedy

Lorna heads the UK Financial Institution Team and is a leader in the broader UK clients business. She joined Baillie Gifford in 2000 having previously worked at Scottish Equitable Asset Management. Her commercial acumen, relationship building skills and knowledge of a wide range of investment strategies has been of significant benefit to clients.



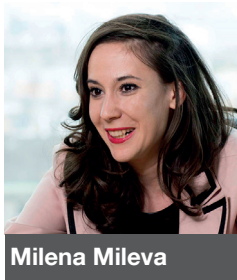
Jenny Davis

Jenny manages the International Alpha Strategy and will become co-leader with Tom Walsh when Angus Franklin retires. She joined Baillie Gifford in 2011 and has made a significant contribution to the performance of the strategy and its continued evolution. She is highly valued as a mentor by many of her colleagues.



Linda Lin

Linda leads Baillie Gifford’s investment research team in Shanghai and is a member of the China A-Share Team. She joined the firm in 2014 having spent four years as a global equity analyst with Aubrey Capital and two years in real estate investment in China. Linda’s ability to identify Chinese growth stocks early in their trajectory has generated excellent investment returns for clients.



Milena is a portfolio manager in the UK Equities Team and a member of the International All Cap Team. She joined Baillie Gifford in 2009 and has been recognised for gaining the respect of both investee company management teams and clients due to her deep business knowledge and rigorous investment approach. She has also been recognised as an effective mentor by many of her colleagues.



Peter leads our investment team dedicated to private companies. He joined Baillie Gifford in 2010 and has driven the rapid development of this capability over the last five years. The links Peter has forged with companies and venture capitalists have significantly advanced the firm's expertise in this strategically important area.



Michael is Head of the US Regional Client Service Teams and a member of the firm's North American Management Group. He joined Baillie Gifford in 2006 after four years with Alliance Trust. Michael has played a significant role in designing and implementing strategic changes across the firm, including fund structures and client teams.



Tom is a member of the International Alpha Team and will become co-leader with Jenny Davis when Angus Franklin retires. He joined Baillie Gifford in 2009 having worked at Fidelity International, Merrill Lynch and Deloitte. Tom's skill in developing investment ideas and working with colleagues on challenging tasks, such as model delivery and governance and sustainability, has added significant value for clients.

Important information and risk factors

Baillie Gifford & Co and Baillie Gifford & Co Limited are authorised and regulated by the Financial Conduct Authority (FCA). Baillie Gifford & Co Limited is an Authorised Corporate Director of OEICs.

Baillie Gifford Overseas Limited provides investment management and advisory services to non-UK Professional/Institutional clients only. Baillie Gifford Overseas Limited is wholly owned by Baillie Gifford & Co. Baillie Gifford Overseas Limited is authorised and regulated by the FCA in the UK.

All information is sourced from Baillie Gifford & Co.

Calton Square, 1 Greenside Row, Edinburgh EH1 3AN
Telephone +44 (0)131 275 2000 bailliegifford.com

